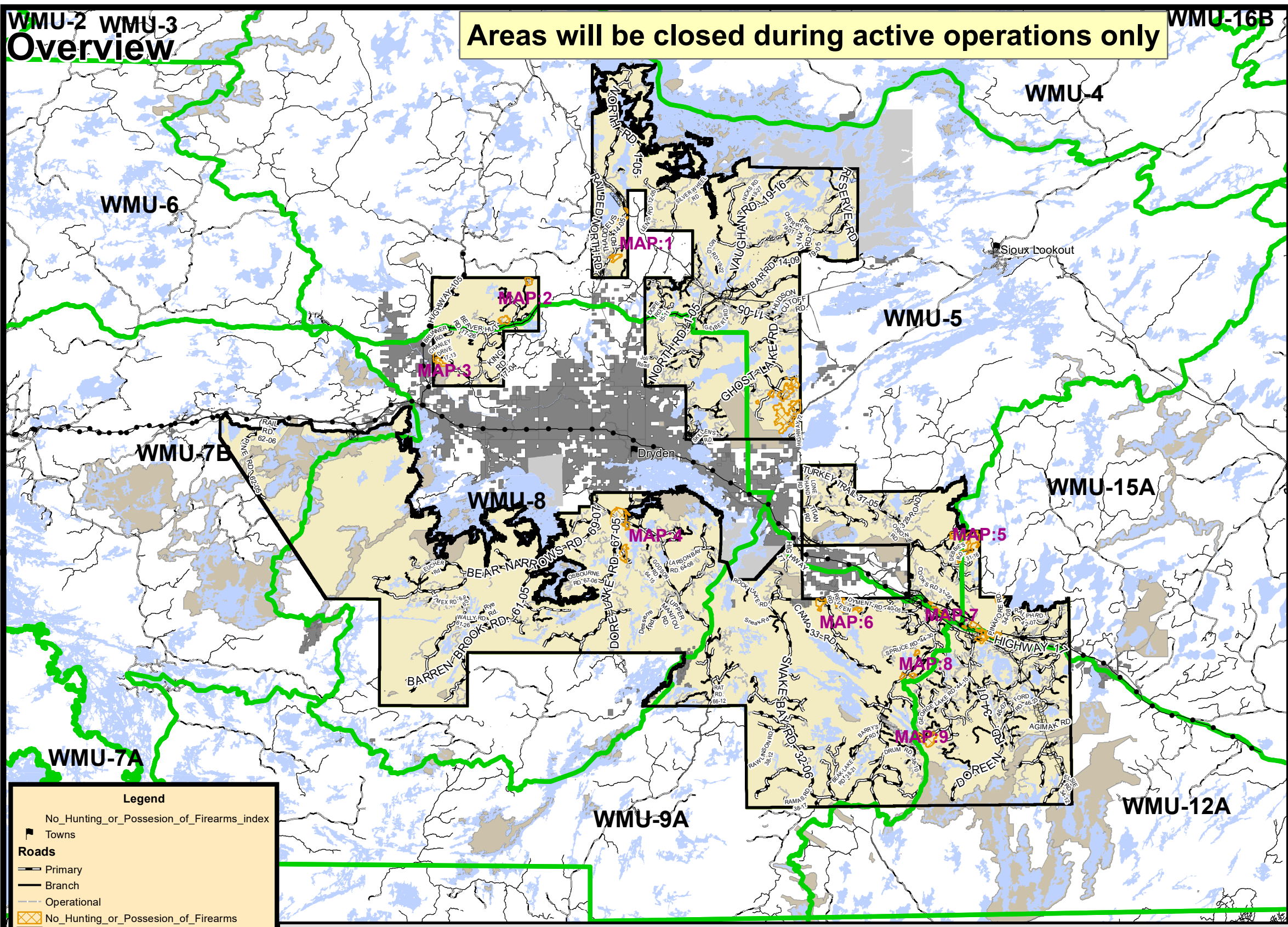


**WMU-2 WMU-3
Overview**

Areas will be closed during active operations only



Legend

- No_Hunting_or_Possession_of_Firearms_index
- Towns
- Roads**
 - Primary
 - Branch
 - Operational
- No_Hunting_or_Possession_of_Firearms
- SFL Boundary
- Wildlife Management Unit
- Water
- First Nations Reserve
- Parks and Conservation Reserves
- Patent Land
- Utilities**
 - Pipeline
 - Railway
 - Transmission line

DISCLAIMER:
This map should not be relied upon as a precise indicator of routes, as a guide to navigation, to establish legal title, boundary lines or locations of improvements. Dryden Fibre Canada ULC and the Ontario Ministry of Natural Resources and Forestry shall not be liable in any way for the use of, or reliance upon, this map or any information on this map.

© Queen's Printer for Ontario 2023
© Dryden Fibre Canada 2023

NOTES:
Planimetric Base Features maintained and provided by the Ontario Ministry of Natural Resources and Forestry (OMNRF, July 2017, Forest Information Manual. Toronto: Queen's Printer of Ontario). Transportation and Forest Resources information are from Domtar Fibre Canada ULC company files.



Wabigoon Forest

ATTENTION HUNTERS
NO HUNTING OR POSSESSION OF FIREARMS AREAS 2023
Cross-hatched Areas in Dryden District
CLOSED DURING ACTIVE OPERATIONS ONLY

Please Observe and Obey All Signs
ONTARIO GOVERNMENT NOTICE:
Closures are in effect during the open rifle season (moose / deer) for the respective Wildlife Management Unit during active operations only.

Firearms must be encased when traveling through cross-hatched area when signs are present.

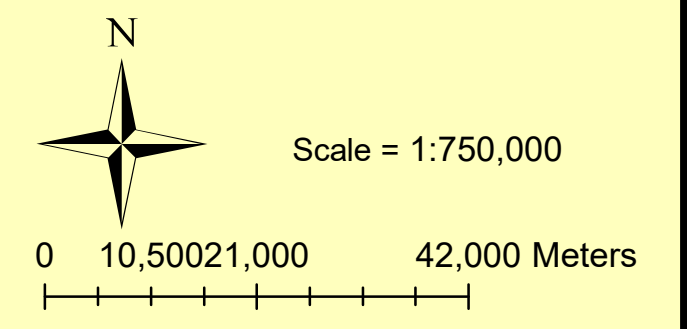
The areas will be clearly signed and hunters are required to obey these signs.

Maps showing potentially closed areas will be available for viewing in the M.N.R.F office in Dryden and at major issuers of hunting licenses in the Dryden area as well as at the Dryden Fibre Canada Gatehouse.

All closures are made under the authority of Subsection 10(2) of the Fish and Wildlife Conservation Act, R.S.O. 1997, Chapter 41, for the purposes of safety of woods workers.

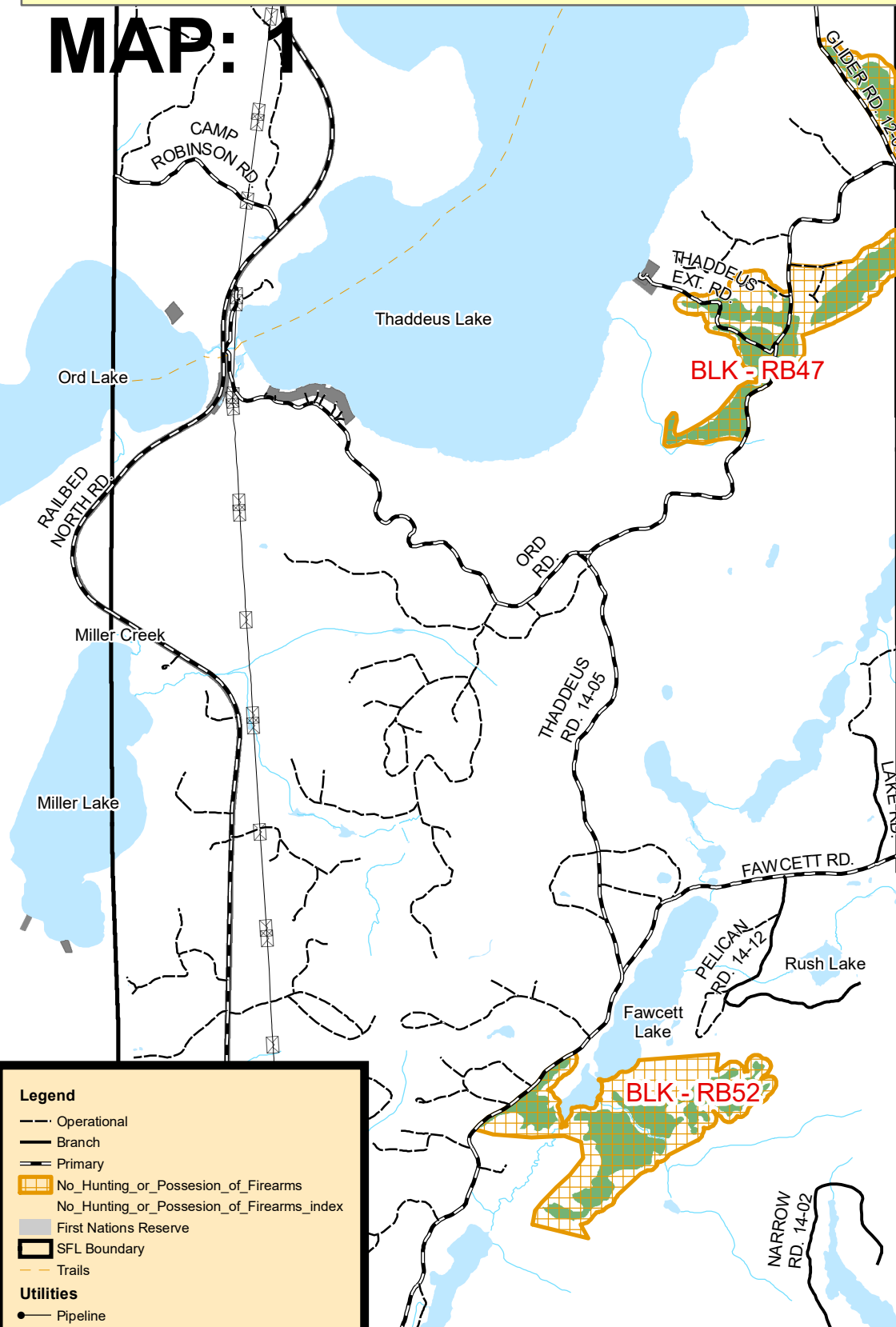
FOR FURTHER INFORMATION CONTACT:

Rob Hoedl Operations Co-ordinator Dryden Fibre Canada P.O. Box 3001 Dryden, ON P8N 2Z7 Phone (807) 221-8986	OR	Daniel Yeboah, R.P.F. Management Forester Dryden Fibre Canada P.O. Box 3001 Dryden, ON P8N 2Z7 Phone (807) 223-9090
--	----	--



Areas will be closed during active operations only

MAP: 1



Legend

- Operational
- Branch
- Primary
- No_Hunting_or_Possession_of_Firearms
- No_Hunting_or_Possession_of_Firearms_index
- First Nations Reserve
- SFL Boundary
- Trails

Utilities

- Pipeline
- Railway
- Transmission line

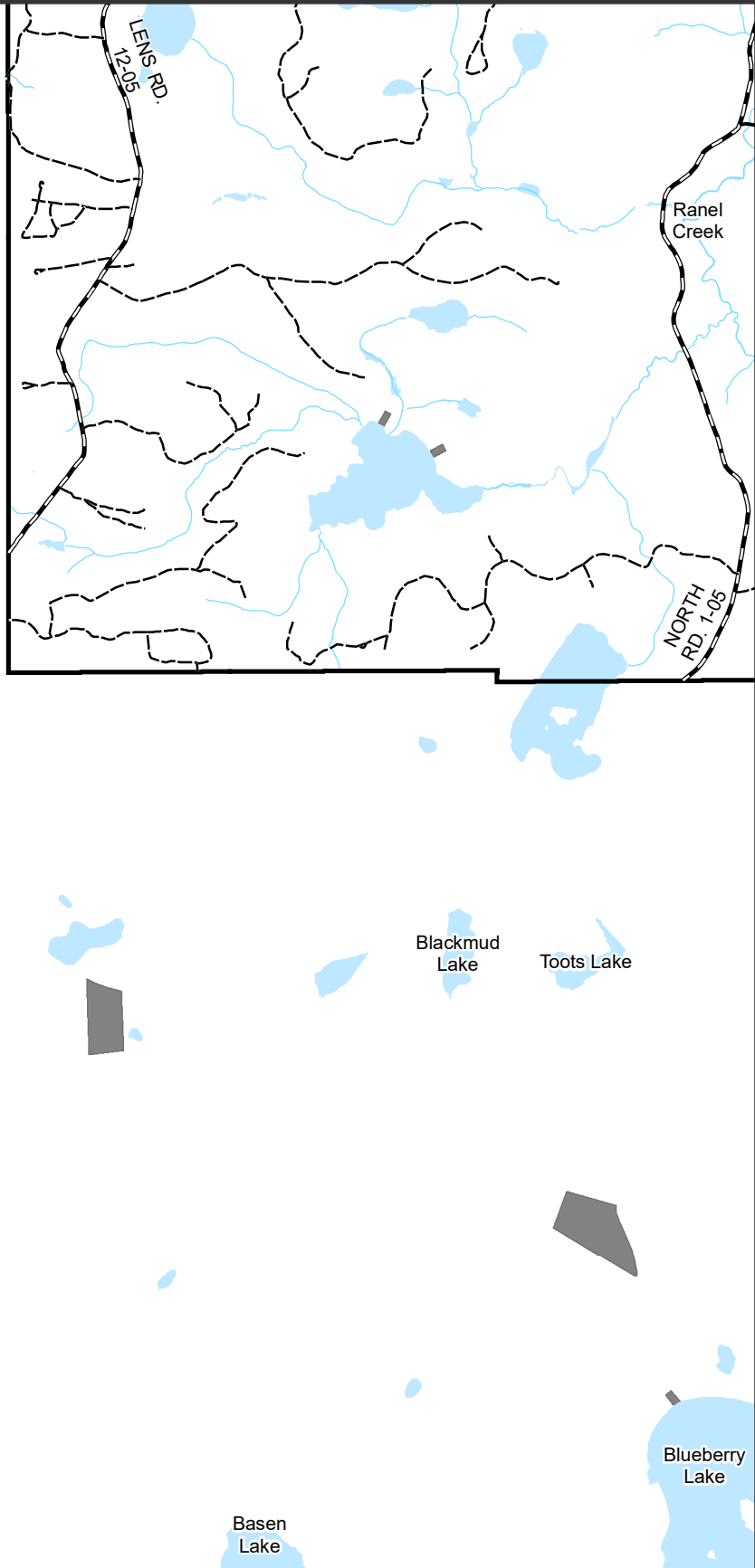
Roads

- Highway
- Streams
- Wildlife Management Unit
- Water
- Patent Land
- Parks and Conservation Reserves
- 2023 Harvest Area

DISCLAIMER:
 This map should not be relied upon as a precise indicator of routes, as a guide to navigation, to establish legal title, boundary lines or locations of improvements. Dryden Fibre Canada ULC and the Ontario Ministry of Natural Resources and Forestry shall not be liable in any way for the use of, or reliance upon, this map or any information on this map.

© Queen's Printer for Ontario 2023
 © Dryden Fibre Canada 2023

WMU-5



NOTES:
 Planimetric Base Features maintained and provided by the Ontario Ministry of Natural Resources and Forestry (OMNRF, July 2017, Forest Information Manual. Toronto: Queen's Printer of Ontario). Transportation and Forest Resources information are from Dryden Fibre Canada ULC company files.



Wabigoon Forest

ATTENTION HUNTERS
 NO HUNTING OR POSSESSION OF FIREARMS AREAS 2023
 Crosshatched Areas in Dryden District CLOSED DURING ACTIVE OPERATIONS ONLY

Please Observe and Obey All Signs
ONTARIO GOVERNMENT NOTICE:
 Closures are in effect during the open rifle season (moose / deer) for the respective Wildlife Management Unit during active operations only.

Firearms must be encased when traveling through cross-hatched area when signs are present.

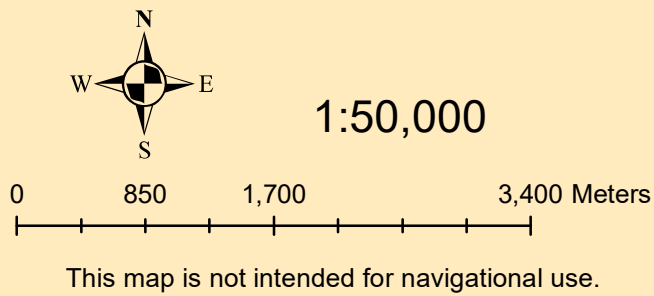
The areas will be clearly signed and hunters are required to obey these signs.

Maps showing potentially closed areas will be available for viewing in the M.N.R.F office in Dryden and at major issuers of hunting licenses in the Dryden area as well as at the Dryden Fibre Canada Gatehouse.

All closures are made under the authority of Subsection 10(2) of the Fish and Wildlife Conservation Act, R.S.O. 1997, Chapter 41, for the purposes of safety of woods workers.

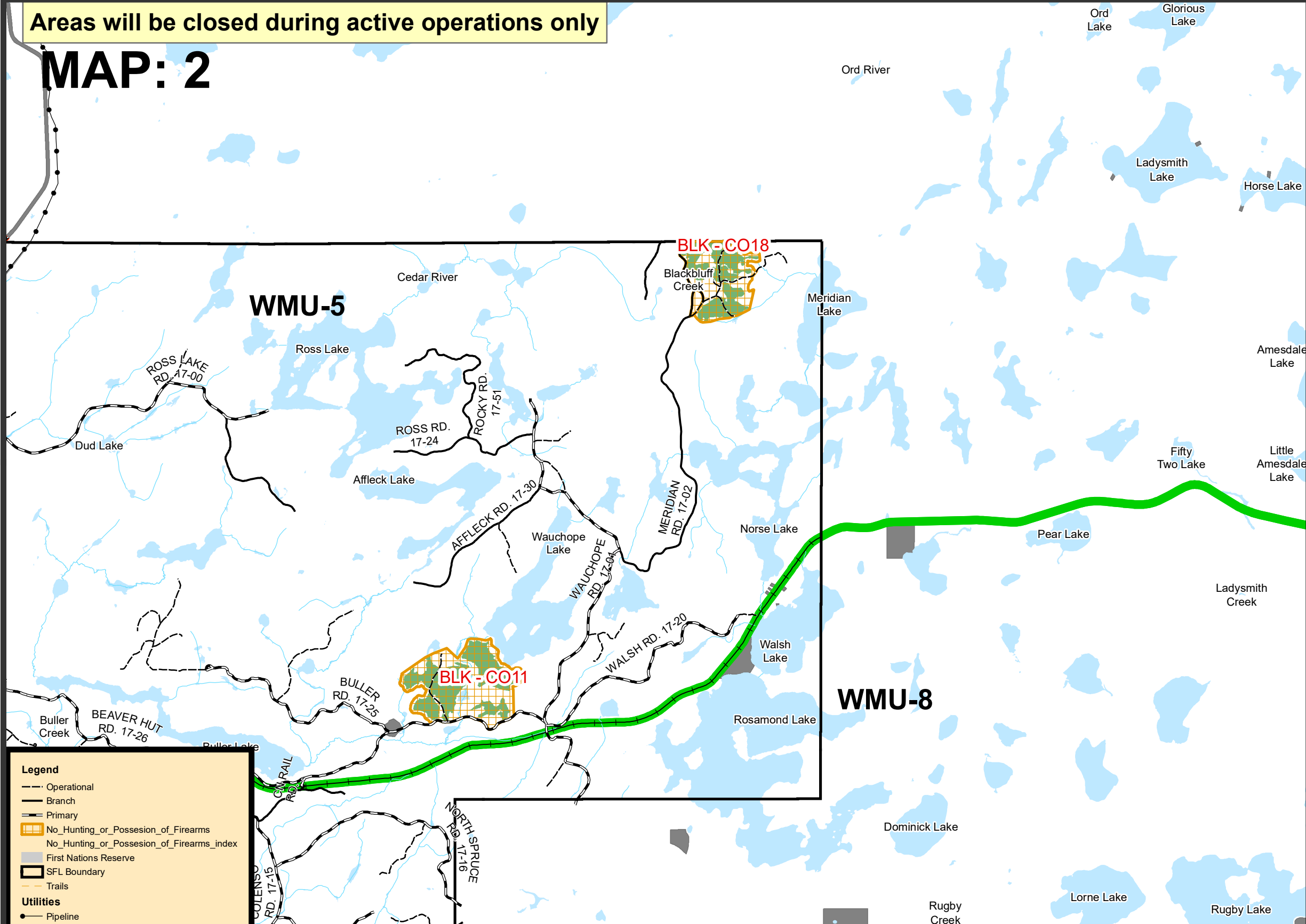
FOR FURTHER INFORMATION CONTACT:

Rob Hoedl Operations Co-Ordinator Dryden Fibre Canada P.O. Box 3001 Dryden, ON P8N 2Z7 Phone (807) 221-8986	Daniel Yeboah, R.P.F. Management Forester Dryden Fibre Canada P.O. Box 3001 Dryden, ON P8N 2Z7 Phone (807) 223-9090
--	--



Areas will be closed during active operations only

MAP: 2



Legend

- Operational
- Branch
- Primary
- No_Hunting_or_Possession_of_Firearms
- No_Hunting_or_Possession_of_Firearms_index
- First Nations Reserve
- SFL Boundary
- Trails

Utilities

- Pipeline
- Railway
- Transmission line

Roads

- Highway
- Streams
- Wildlife Management Unit
- Water
- Patent Land
- Parks and Conservation Reserves
- 2023 Harvest Area

DISCLAIMER:
 This map should not be relied upon as a precise indicator of routes, as a guide to navigation, to establish legal title, boundary lines or locations of improvements. Dryden Fibre Canada ULC and the Ontario Ministry of Natural Resources and Forestry shall not be liable in any way for the use of, or reliance upon, this map or any information on this map.

© Queen's Printer for Ontario 2023
 © Dryden Fibre Canada 2023

NOTES:
 Planimetric Base Features maintained and provided by the Ontario Ministry of Natural Resources and Forestry (OMNRF, July 2017, Forest Information Manual. Toronto: Queen's Printer of Ontario). Transportation and Forest Resources information are from Dryden Fibre Canada ULC company files.



Wabigoon Forest

ATTENTION HUNTERS
 NO HUNTING OR POSSESSION OF FIREARMS AREAS 2023
 Crosshatched Areas in Dryden District CLOSED DURING ACTIVE OPERATIONS ONLY

Please Observe and Obey All Signs
ONTARIO GOVERNMENT NOTICE:
 Closures are in effect during the open rifle season (moose / deer) for the respective Wildlife Management Unit during active operations only.

Firearms must be encased when traveling through cross-hatched area when signs are present.

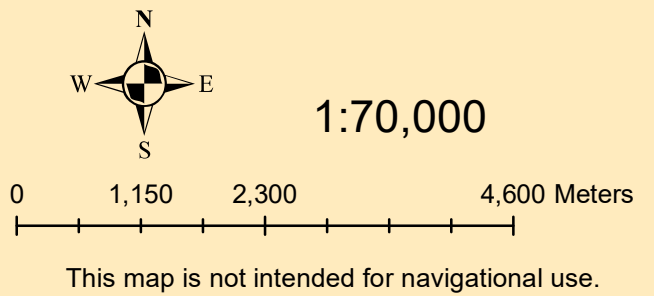
The areas will be clearly signed and hunters are required to obey these signs.

Maps showing potentially closed areas will be available for viewing in the M.N.R.F office in Dryden and at major issuers of hunting licenses in the Dryden area as well as at the Dryden Fibre Canada Gatehouse.

All closures are made under the authority of Subsection 10(2) of the Fish and Wildlife Conservation Act, R.S.O. 1997, Chapter 41, for the purposes of safety of woods workers.

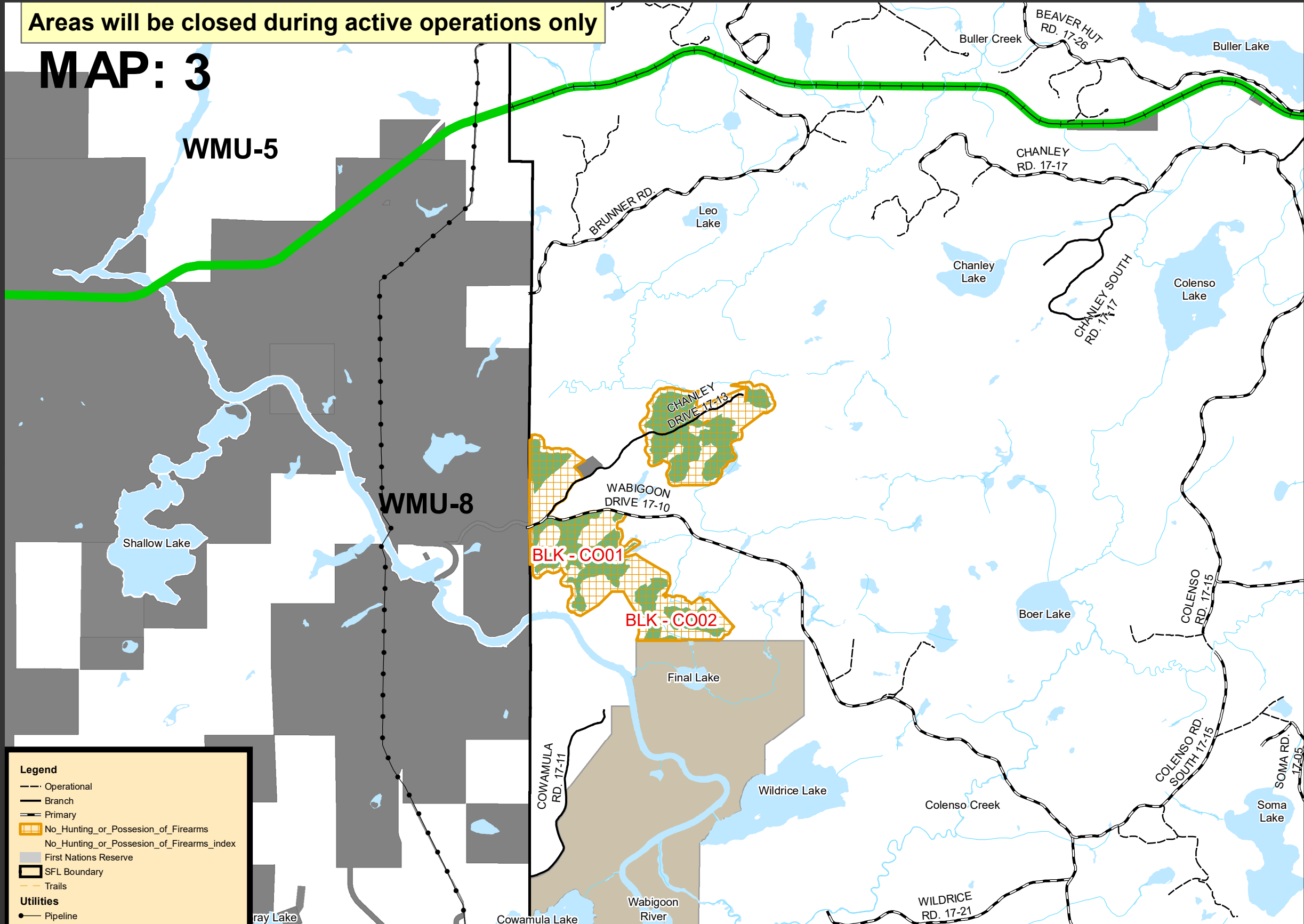
FOR FURTHER INFORMATION CONTACT:

Rob Hoedl Operations Co-Ordinator Dryden Fibre Canada P.O. Box 3001 Dryden, ON P8N 2Z7 Phone (807) 221-8986	OR	Daniel Yeboah, R.P.F. Management Forester Dryden Fibre Canada P.O. Box 3001 Dryden, ON P8N 2Z7 Phone (807) 223-9090
--	----	--



Areas will be closed during active operations only

MAP: 3



Legend

- Operational
- Branch
- Primary
- No_Hunting_or_Possession_of_Firearms
- No_Hunting_or_Possession_of_Firearms_index
- First Nations Reserve
- SFL Boundary
- Trails
- Utilities**
- Pipeline
- Railway
- Transmission line
- Roads**
- Highway
- Streams
- Wildlife Management Unit
- Water
- Patent Land
- Parks and Conservation Reserves
- 2023 Harvest Area

DISCLAIMER:
 This map should not be relied upon as a precise indicator of routes, as a guide to navigation, to establish legal title, boundary lines or locations of improvements. Dryden Fibre Canada ULC and the Ontario Ministry of Natural Resources and Forestry shall not be liable in any way for the use of, or reliance upon, this map or any information on this map.

© Queen's Printer for Ontario 2023
 © Dryden Fibre Canada 2023

NOTES:
 Planimetric Base Features maintained and provided by the Ontario Ministry of Natural Resources and Forestry (OMNRF, July 2017, Forest Information Manual. Toronto: Queen's Printer of Ontario). Transportation and Forest Resources information are from Dryden Fibre Canada ULC company files.



Wabigoon Forest

ATTENTION HUNTERS
 NO HUNTING OR POSSESSION OF FIREARMS AREAS 2023
 Crosshatched Areas in Dryden District CLOSED DURING ACTIVE OPERATIONS ONLY

Please Observe and Obey All Signs
ONTARIO GOVERNMENT NOTICE:
 Closures are in effect during the open rifle season (moose / deer) for the respective Wildlife Management Unit during active operations only.

Firearms must be encased when traveling through cross-hatched area when signs are present.

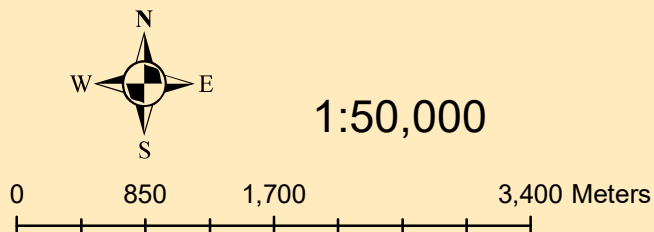
The areas will be clearly signed and hunters are required to obey these signs.

Maps showing potentially closed areas will be available for viewing in the M.N.R.F office in Dryden and at major issuers of hunting licenses in the Dryden area as well as at the Dryden Fibre Canada Gatehouse.

All closures are made under the authority of Subsection 10(2) of the Fish and Wildlife Conservation Act, R.S.O. 1997, Chapter 41, for the purposes of safety of woods workers.

FOR FURTHER INFORMATION CONTACT:

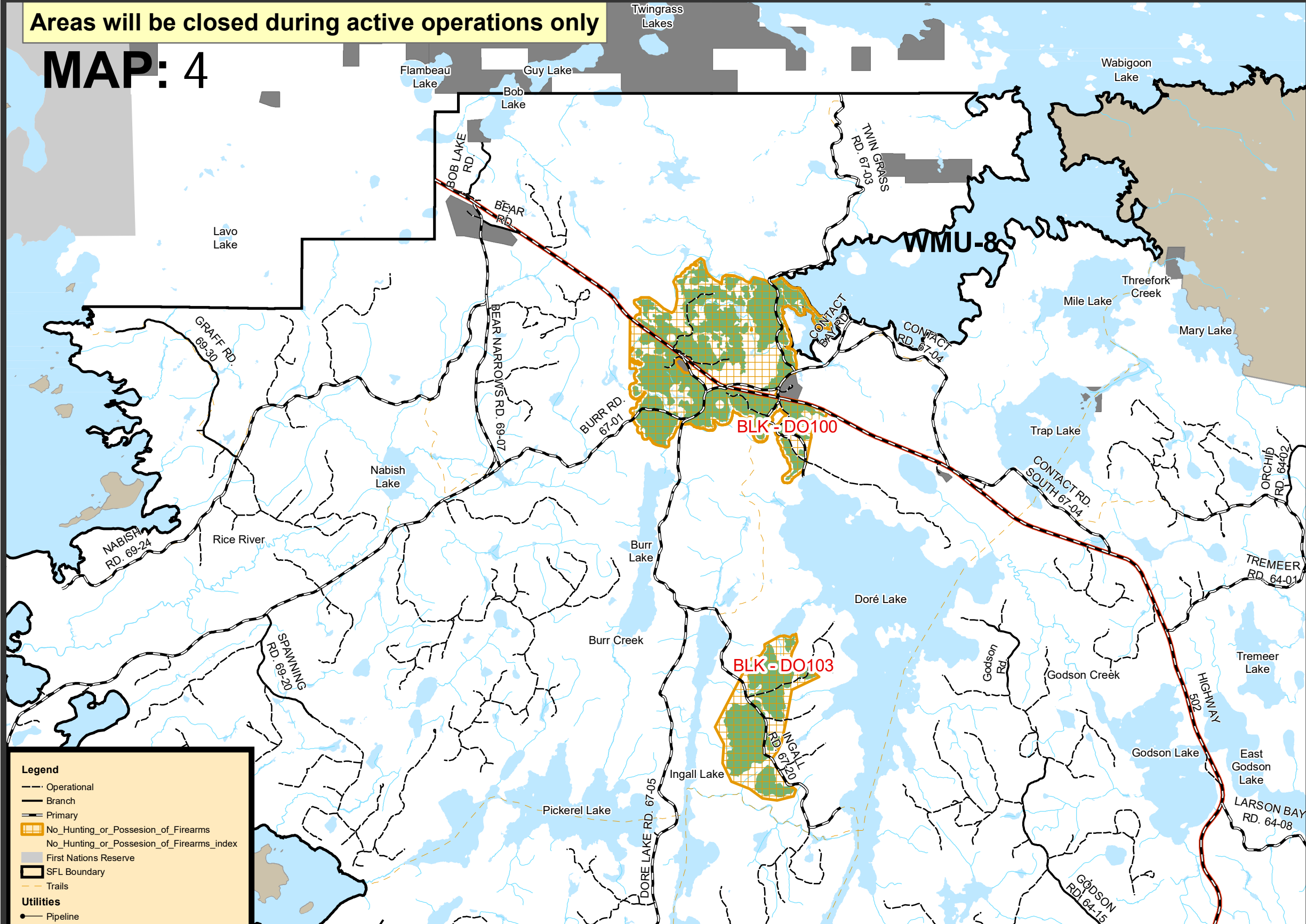
Rob Hoedl Operations Co-Ordinator Dryden Fibre Canada P.O. Box 3001 Dryden, ON P8N 2Z7 Phone (807) 221-8986	OR	Daniel Yeboah, R.P.F. Management Forester Dryden Fibre Canada P.O. Box 3001 Dryden, ON P8N 2Z7 Phone (807) 223-9090
--	----	--



This map is not intended for navigational use.

Areas will be closed during active operations only

MAP: 4



Legend

- Operational
- Branch
- Primary
- No_Hunting_or_Possession_of_Firearms
- No_Hunting_or_Possession_of_Firearms_index
- First Nations Reserve
- SFL Boundary
- Trails

Utilities

- Pipeline
- Railway
- Transmission line

Roads

- Highway
- Streams
- Wildlife Management Unit
- Water
- Patent Land
- Parks and Conservation Reserves
- 2023 Harvest Area

DISCLAIMER:
 This map should not be relied upon as a precise indicator of routes, as a guide to navigation, to establish legal title, boundary lines or locations of improvements. Dryden Fibre Canada ULC and the Ontario Ministry of Natural Resources and Forestry shall not be liable in any way for the use of, or reliance upon, this map or any information on this map.

© Queen's Printer for Ontario 2023
 © Dryden Fibre Canada 2023

NOTES:
 Planimetric Base Features maintained and provided by the Ontario Ministry of Natural Resources and Forestry (OMNRF, July 2017, Forest Information Manual. Toronto: Queen's Printer of Ontario). Transportation and Forest Resources information are from Dryden Fibre Canada ULC company files.



Wabigoon Forest

ATTENTION HUNTERS
 NO HUNTING OR POSSESSION OF FIREARMS AREAS 2023
 Crosshatched Areas in Dryden District
 CLOSED DURING ACTIVE OPERATIONS ONLY

Please Observe and Obey All Signs
ONTARIO GOVERNMENT NOTICE:
 Closures are in effect during the open rifle season (moose / deer) for the respective Wildlife Management Unit during active operations only.

Firearms must be encased when traveling through cross-hatched area when signs are present.

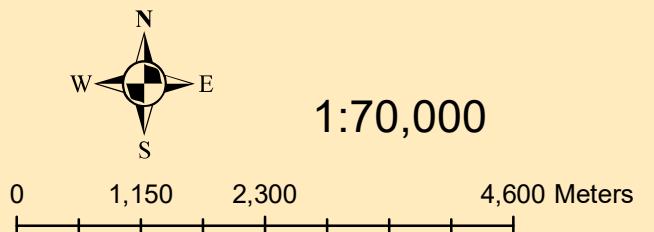
The areas will be clearly signed and hunters are required to obey these signs.

Maps showing potentially closed areas will be available for viewing in the M.N.R.F office in Dryden and at major issuers of hunting licenses in the Dryden area as well as at the Dryden Fibre Canada Gatehouse.

All closures are made under the authority of Subsection 10(2) of the Fish and Wildlife Conservation Act, R.S.O. 1997, Chapter 41, for the purposes of safety of woods workers.

FOR FURTHER INFORMATION CONTACT:

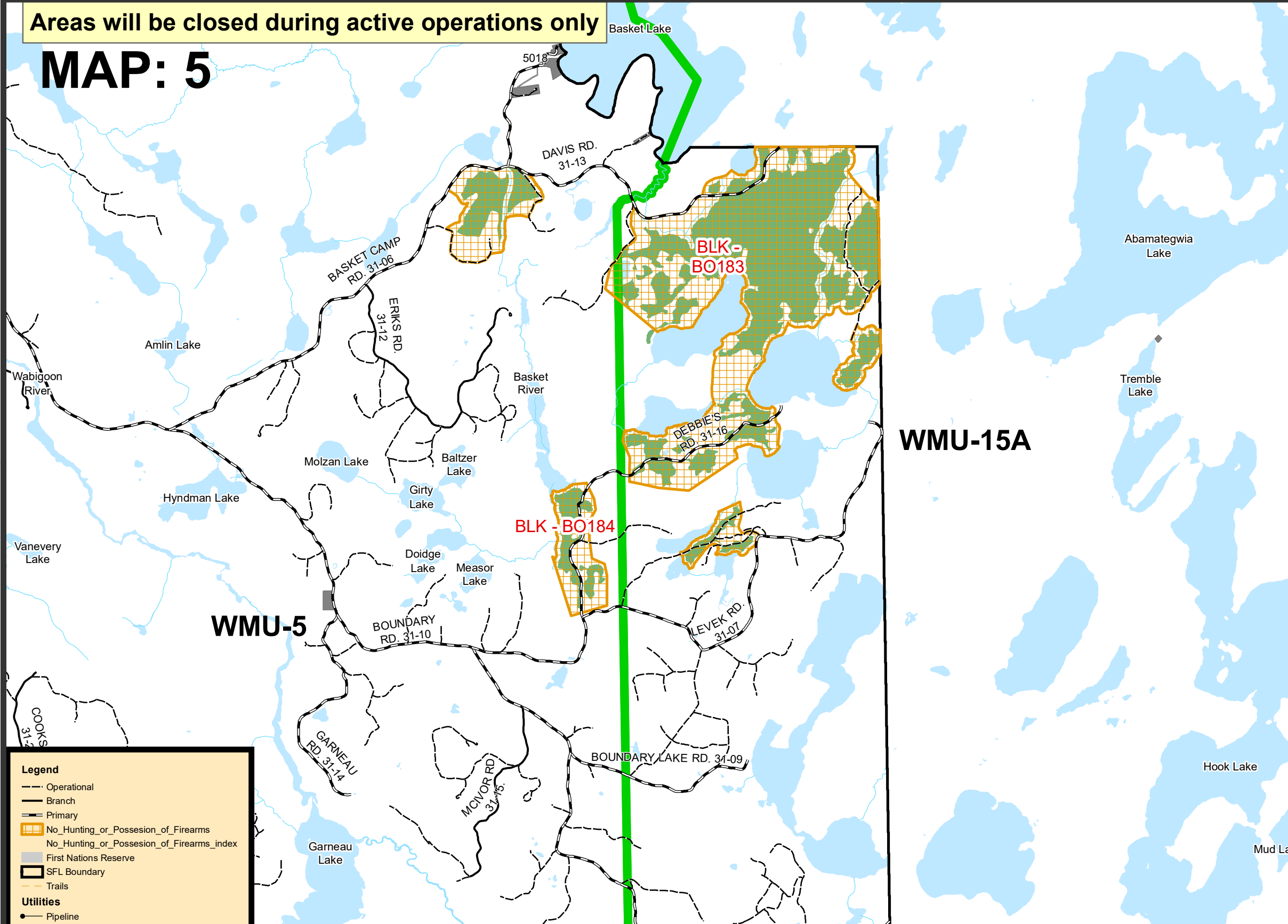
Rob Hoedl Operations Co-Ordinator Dryden Fibre Canada P.O. Box 3001 Dryden, ON P8N 2Z7 Phone (807) 221-8986	Daniel Yeboah, R.P.F. Management Forester Dryden Fibre Canada P.O. Box 3001 Dryden, ON P8N 2Z7 Phone (807) 223-9090
--	--



This map is not intended for navigational use.

Areas will be closed during active operations only

MAP: 5



Legend

- Operational
- Branch
- Primary
- No_Hunting_or_Possession_of_Firearms
- No_Hunting_or_Possession_of_Firearms_index
- First Nations Reserve
- SFL Boundary
- Trails

Utilities

- Pipeline
- Railway
- Transmission line

Roads

- Highway
- Streams
- Wildlife Management Unit
- Water
- Patent Land
- Parks and Conservation Reserves
- 2023 Harvest Area

DISCLAIMER:
 This map should not be relied upon as a precise indicator of routes, as a guide to navigation, to establish legal title, boundary lines or locations of improvements. Dryden Fibre Canada ULC and the Ontario Ministry of Natural Resources and Forestry shall not be liable in any way for the use of, or reliance upon, this map or any information on this map.

© Queen's Printer for Ontario 2023
 © Dryden Fibre Canada 2023

NOTES:
 Planimetric Base Features maintained and provided by the Ontario Ministry of Natural Resources and Forestry (OMNRF, July 2017, Forest Information Manual. Toronto: Queen's Printer of Ontario). Transportation and Forest Resources information are from Dryden Fibre Canada ULC company files.



Wabigoon Forest

ATTENTION HUNTERS
 NO HUNTING OR POSSESSION OF FIREARMS AREAS 2023
 Crosshatched Areas in Dryden District CLOSED DURING ACTIVE OPERATIONS ONLY

Please Observe and Obey All Signs
 ONTARIO GOVERNMENT NOTICE:
 Closures are in effect during the open rifle season (moose / deer) for the respective Wildlife Management Unit during active operations only.

Firearms must be encased when traveling through cross-hatched area when signs are present.

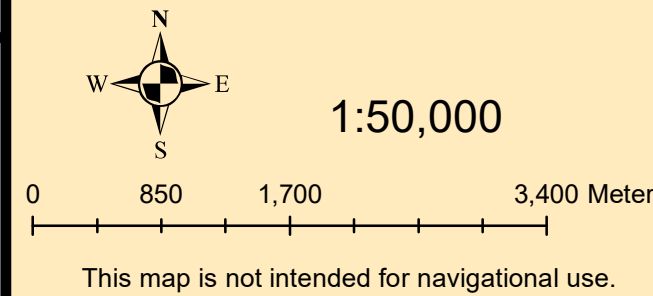
The areas will be clearly signed and hunters are required to obey these signs.

Maps showing potentially closed areas will be available for viewing in the M.N.R.F office in Dryden and at major issuers of hunting licenses in the Dryden area as well as at the Dryden Fibre Canada Gatehouse.

All closures are made under the authority of Subsection 10(2) of the Fish and Wildlife Conservation Act, R.S.O. 1997, Chapter 41, for the purposes of safety of woods workers.

FOR FURTHER INFORMATION CONTACT:

Rob Hoedl Operations Co-Ordinator Dryden Fibre Canada P.O. Box 3001 Dryden, ON P8N 2Z7 Phone (807) 221-8986	Daniel Yeboah, R.P.F. Management Forester Dryden Fibre Canada P.O. Box 3001 Dryden, ON P8N 2Z7 Phone (807) 223-9090
--	--

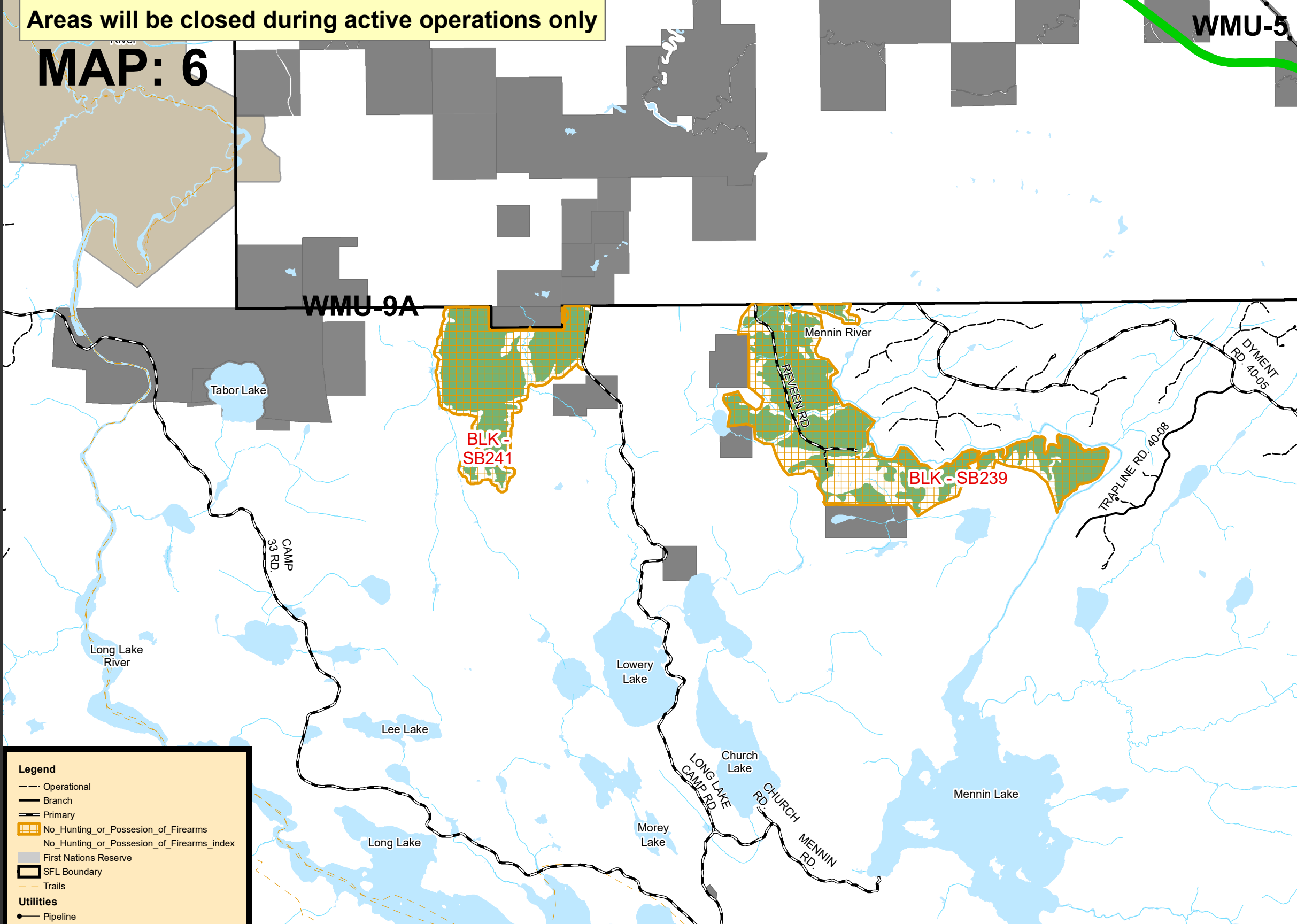


Areas will be closed during active operations only

MAP: 6

WMU-5

WMU-9A



Legend

- Operational
- Branch
- Primary
- No_Hunting_or_Possession_of_Firearms
- No_Hunting_or_Possession_of_Firearms_index
- First Nations Reserve
- SFL Boundary
- Trails

Utilities

- Pipeline
- Railway
- Transmission line

Roads

- Highway
- Streams
- Wildlife Management Unit
- Water
- Patent Land
- Parks and Conservation Reserves
- 2023 Harvest Area

DISCLAIMER:
 This map should not be relied upon as a precise indicator of routes, as a guide to navigation, to establish legal title, boundary lines or locations of improvements. Dryden Fibre Canada ULC and the Ontario Ministry of Natural Resources and Forestry shall not be liable in any way for the use of, or reliance upon, this map or any information on this map.

© Queen's Printer for Ontario 2023
 © Dryden Fibre Canada 2023

NOTES:
 Planimetric Base Features maintained and provided by the Ontario Ministry of Natural Resources and Forestry (OMNRF, July 2017, Forest Information Manual. Toronto: Queen's Printer of Ontario). Transportation and Forest Resources information are from Dryden Fibre Canada ULC company files.



Wabigoon Forest

ATTENTION HUNTERS
 NO HUNTING OR POSSESSION OF FIREARMS AREAS 2023
 Crosshatched Areas in Dryden District CLOSED DURING ACTIVE OPERATIONS ONLY

Please Observe and Obey All Signs
ONTARIO GOVERNMENT NOTICE:
 Closures are in effect during the open rifle season (moose / deer) for the respective Wildlife Management Unit during active operations only.

Firearms must be encased when traveling through cross-hatched area when signs are present.

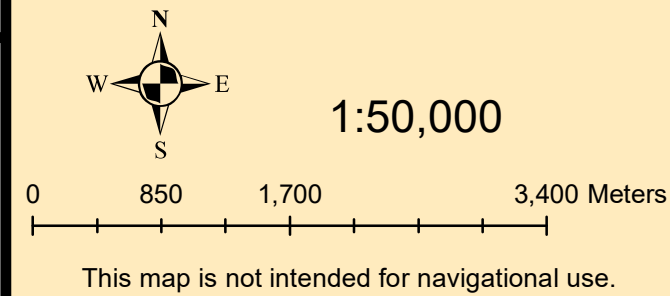
The areas will be clearly signed and hunters are required to obey these signs.

Maps showing potentially closed areas will be available for viewing in the M.N.R.F office in Dryden and at major issuers of hunting licenses in the Dryden area as well as at the Dryden Fibre Canada Gatehouse.

All closures are made under the authority of Subsection 10(2) of the Fish and Wildlife Conservation Act, R.S.O. 1997, Chapter 41, for the purposes of safety of woods workers.

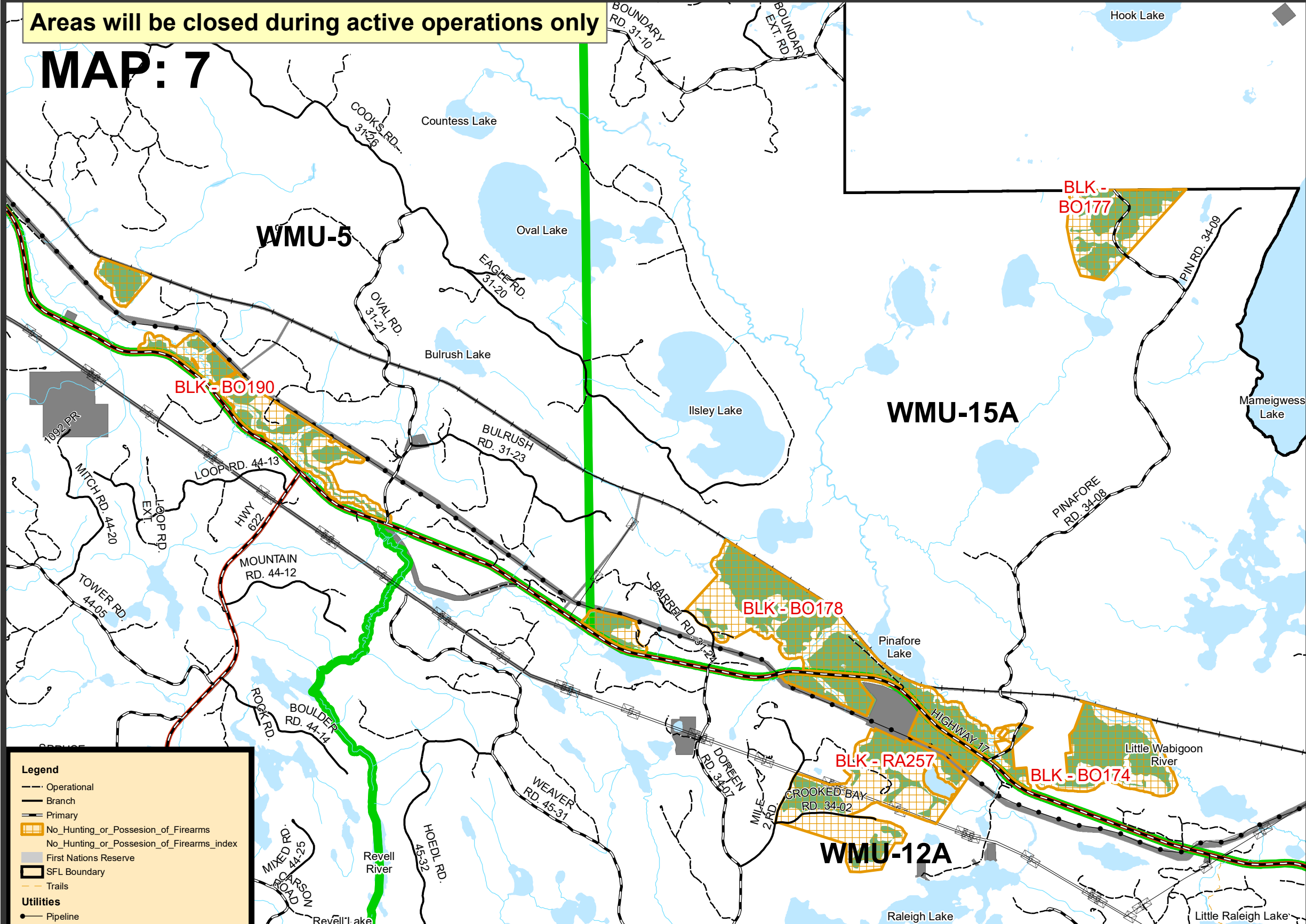
FOR FURTHER INFORMATION CONTACT:

Rob Hoedl Operations Co-Ordinator Dryden Fibre Canada P.O. Box 3001 Dryden, ON P8N 2Z7 Phone (807) 221-8986	OR	Daniel Yeboah, R.P.F. Management Forester Dryden Fibre Canada P.O. Box 3001 Dryden, ON P8N 2Z7 Phone (807) 223-9090
--	----	--



Areas will be closed during active operations only

MAP: 7



Legend

- Operational
- Branch
- Primary
- No_Hunting_or_Possession_of_Firearms
- No_Hunting_or_Possession_of_Firearms_index
- First Nations Reserve
- SFL Boundary
- Trails

Utilities

- Pipeline
- Railway
- Transmission line

Roads

- Highway
- Streams
- Wildlife Management Unit
- Water
- Patent Land
- Parks and Conservation Reserves
- 2023 Harvest Area

DISCLAIMER:
 This map should not be relied upon as a precise indicator of routes, as a guide to navigation, to establish legal title, boundary lines or locations of improvements. Dryden Fibre Canada ULC and the Ontario Ministry of Natural Resources and Forestry shall not be liable in any way for the use of, or reliance upon, this map or any information on this map.

© Queen's Printer for Ontario 2023
 © Dryden Fibre Canada 2023

NOTES:
 Planimetric Base Features maintained and provided by the Ontario Ministry of Natural Resources and Forestry (OMNRF, July 2017, Forest Information Manual. Toronto: Queen's Printer of Ontario). Transportation and Forest Resources information are from Dryden Fibre Canada ULC company files.



Wabigoon Forest

ATTENTION HUNTERS
 NO HUNTING OR POSSESSION OF FIREARMS AREAS 2023
 Crosshatched Areas in Dryden District CLOSED DURING ACTIVE OPERATIONS ONLY

Please Observe and Obey All Signs
ONTARIO GOVERNMENT NOTICE:
 Closures are in effect during the open rifle season (moose / deer) for the respective Wildlife Management Unit during active operations only.

Firearms must be encased when traveling through cross-hatched area when signs are present.

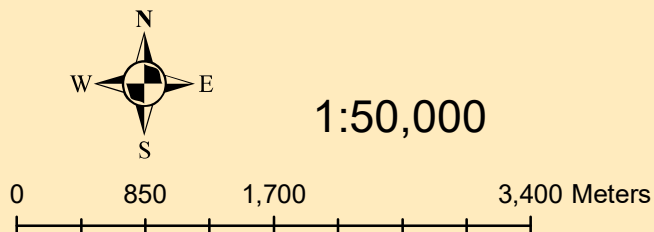
The areas will be clearly signed and hunters are required to obey these signs.

Maps showing potentially closed areas will be available for viewing in the M.N.R.F office in Dryden and at major issuers of hunting licenses in the Dryden area as well as at the Dryden Fibre Canada Gatehouse.

All closures are made under the authority of Subsection 10(2) of the Fish and Wildlife Conservation Act, R.S.O. 1997, Chapter 41, for the purposes of safety of woods workers.

FOR FURTHER INFORMATION CONTACT:

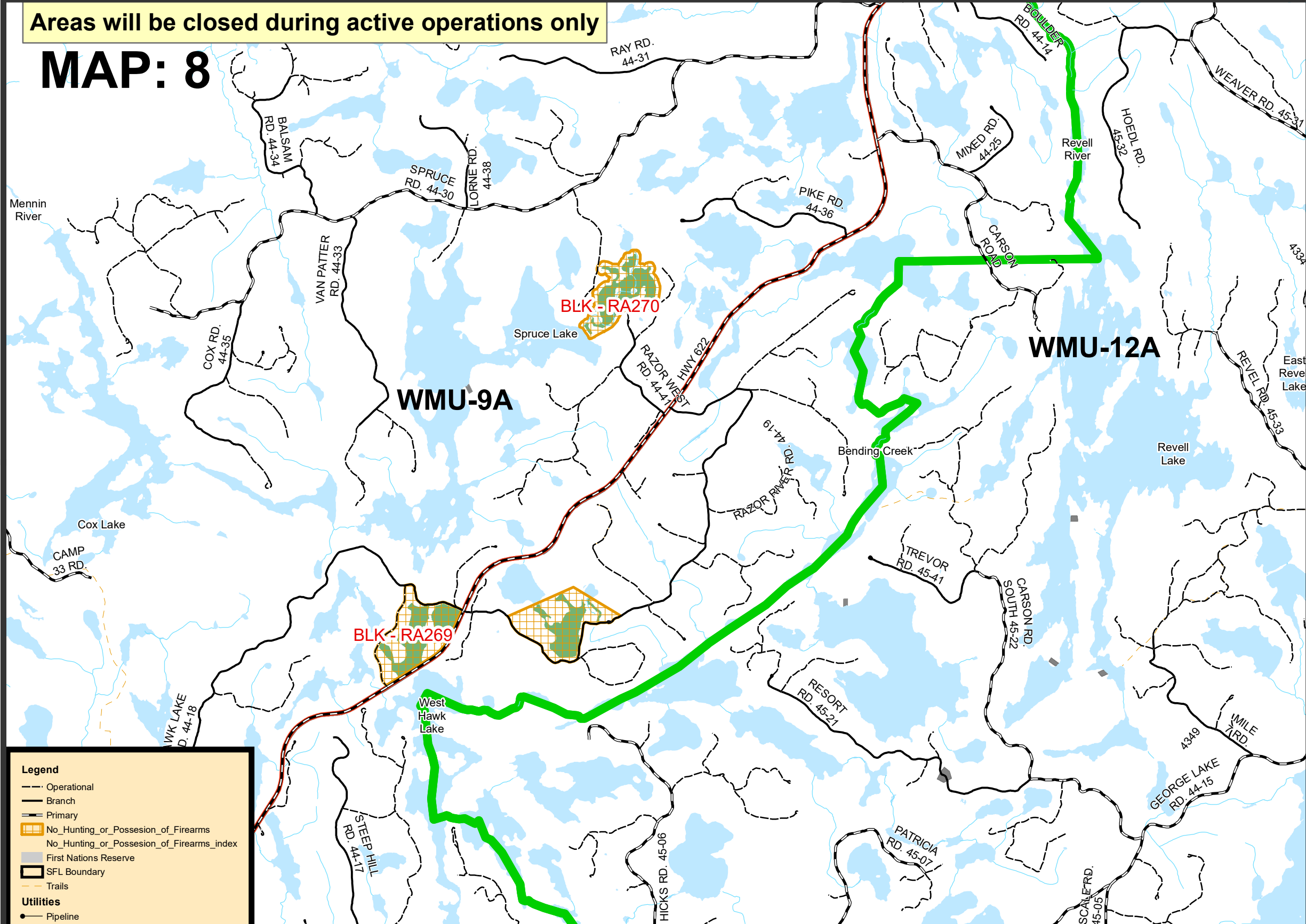
Rob Hoedl Operations Co-Ordinator Dryden Fibre Canada P.O. Box 3001 Dryden, ON P8N 2Z7 Phone (807) 221-8986	Daniel Yeboah, R.P.F. Management Forester Dryden Fibre Canada P.O. Box 3001 Dryden, ON P8N 2Z7 Phone (807) 223-9090
--	--



This map is not intended for navigational use.

Areas will be closed during active operations only

MAP: 8



Legend

- Operational
- Branch
- Primary
- No_Hunting_or_Possession_of_Firearms
- No_Hunting_or_Possession_of_Firearms_index
- First Nations Reserve
- SFL Boundary
- Trails

Utilities

- Pipeline
- Railway
- Transmission line

Roads

- Highway
- Streams
- Wildlife Management Unit
- Water
- Patent Land
- Parks and Conservation Reserves
- 2023 Harvest Area

DISCLAIMER:
 This map should not be relied upon as a precise indicator of routes, as a guide to navigation, to establish legal title, boundary lines or locations of improvements. Dryden Fibre Canada ULC and the Ontario Ministry of Natural Resources and Forestry shall not be liable in any way for the use of, or reliance upon, this map or any information on this map.

© Queen's Printer for Ontario 2023
 © Dryden Fibre Canada 2023

NOTES:
 Planimetric Base Features maintained and provided by the Ontario Ministry of Natural Resources and Forestry (OMNRF, July 2017, Forest Information Manual. Toronto: Queen's Printer of Ontario). Transportation and Forest Resources information are from Dryden Fibre Canada ULC company files.



Wabigoon Forest

ATTENTION HUNTERS
 NO HUNTING OR POSSESSION OF FIREARMS AREAS 2023
 Crosshatched Areas in Dryden District CLOSED DURING ACTIVE OPERATIONS ONLY

Please Observe and Obey All Signs
ONTARIO GOVERNMENT NOTICE:
 Closures are in effect during the open rifle season (moose / deer) for the respective Wildlife Management Unit during active operations only.

Firearms must be encased when traveling through cross-hatched area when signs are present.

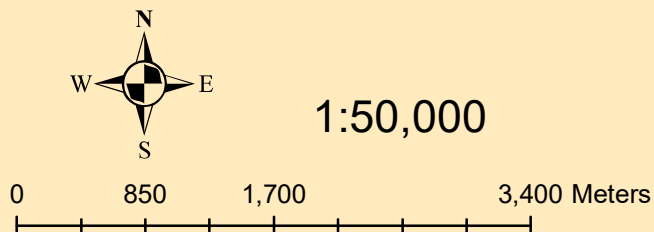
The areas will be clearly signed and hunters are required to obey these signs.

Maps showing potentially closed areas will be available for viewing in the M.N.R.F office in Dryden and at major issuers of hunting licenses in the Dryden area as well as at the Dryden Fibre Canada Gatehouse.

All closures are made under the authority of Subsection 10(2) of the Fish and Wildlife Conservation Act, R.S.O. 1997, Chapter 41, for the purposes of safety of woods workers.

FOR FURTHER INFORMATION CONTACT:

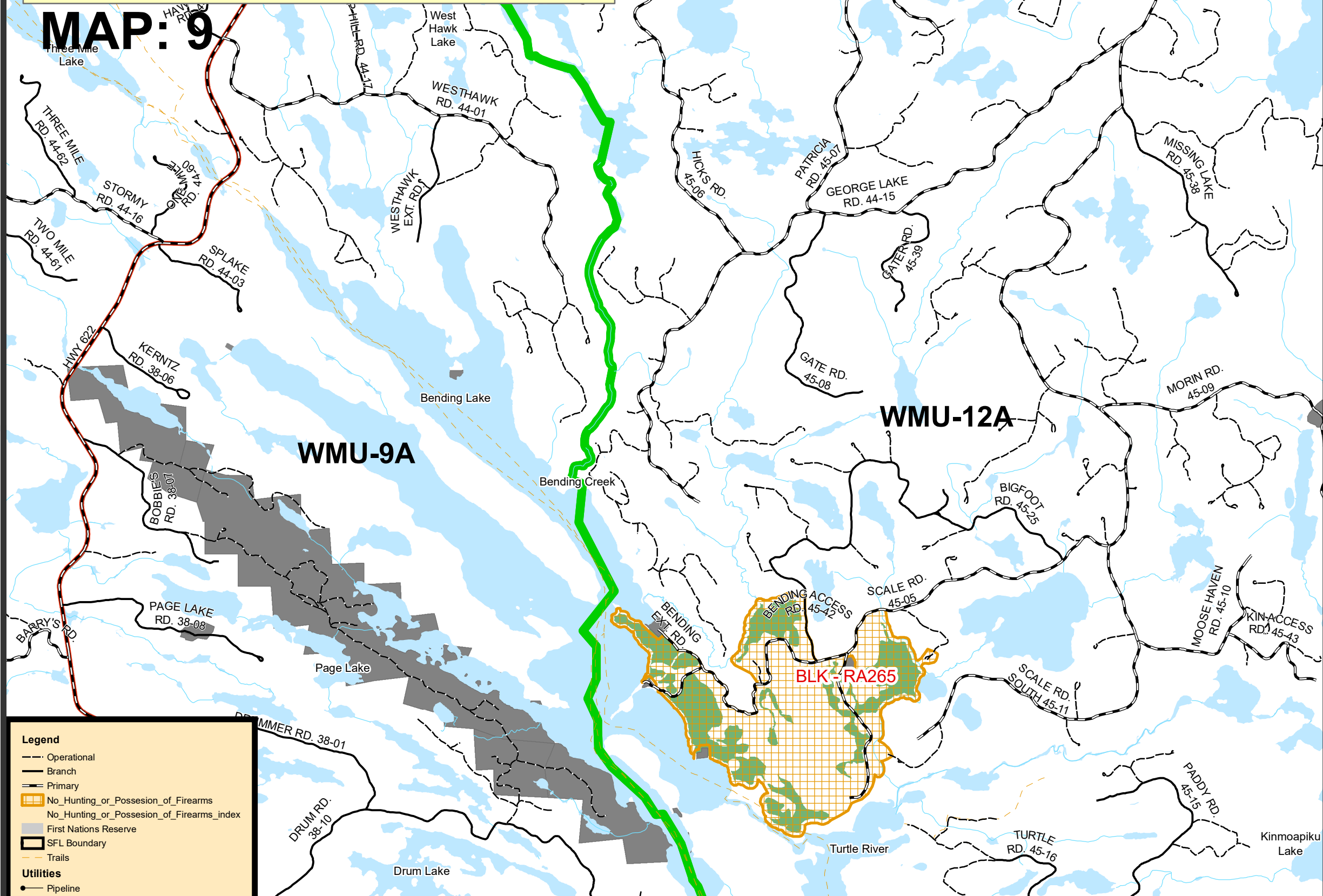
Rob Hoedl Operations Co-Ordinator Dryden Fibre Canada P.O. Box 3001 Dryden, ON P8N 2Z7 Phone (807) 221-8986	OR	Daniel Yeboah, R.P.F. Management Forester Dryden Fibre Canada P.O. Box 3001 Dryden, ON P8N 2Z7 Phone (807) 223-9090
--	----	--



This map is not intended for navigational use.

Areas will be closed during active operations only

MAP: 9



Legend

- Operational
- Branch
- Primary
- No_Hunting_or_Possession_of_Firearms
- No_Hunting_or_Possession_of_Firearms_index
- First Nations Reserve
- SFL Boundary
- Trails

Utilities

- Pipeline
- Railway
- Transmission line

Roads

- Highway
- Streams
- Wildlife Management Unit
- Water
- Patent Land
- Parks and Conservation Reserves
- 2023 Harvest Area

DISCLAIMER:
 This map should not be relied upon as a precise indicator of routes, as a guide to navigation, to establish legal title, boundary lines or locations of improvements. Dryden Fibre Canada ULC and the Ontario Ministry of Natural Resources and Forestry shall not be liable in any way for the use of, or reliance upon, this map or any information on this map.

© Queen's Printer for Ontario 2023
 © Dryden Fibre Canada 2023

NOTES:
 Planimetric Base Features maintained and provided by the Ontario Ministry of Natural Resources and Forestry (OMNRF, July 2017, Forest Information Manual. Toronto: Queen's Printer of Ontario). Transportation and Forest Resources information are from Dryden Fibre Canada ULC company files.



Wabigoon Forest

ATTENTION HUNTERS
 NO HUNTING OR POSSESSION OF FIREARMS AREAS 2023
 Crosshatched Areas in Dryden District CLOSED DURING ACTIVE OPERATIONS ONLY

Please Observe and Obey All Signs
ONTARIO GOVERNMENT NOTICE:
 Closures are in effect during the open rifle season (moose / deer) for the respective Wildlife Management Unit during active operations only.

Firearms must be encased when traveling through cross-hatched area when signs are present.

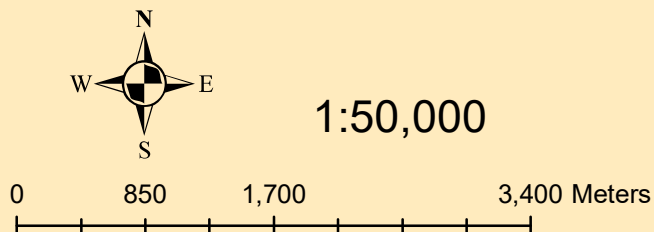
The areas will be clearly signed and hunters are required to obey these signs.

Maps showing potentially closed areas will be available for viewing in the M.N.R.F office in Dryden and at major issuers of hunting licenses in the Dryden area as well as at the Dryden Fibre Canada Gatehouse.

All closures are made under the authority of Subsection 10(2) of the Fish and Wildlife Conservation Act, R.S.O. 1997, Chapter 41, for the purposes of safety of woods workers.

FOR FURTHER INFORMATION CONTACT:

Rob Hoedl Operations Co-Ordinator Dryden Fibre Canada P.O. Box 3001 Dryden, ON P8N 2Z7 Phone (807) 221-8986	Daniel Yeboah, R.P.F. Management Forester Dryden Fibre Canada P.O. Box 3001 Dryden, ON P8N 2Z7 Phone (807) 223-9090
--	--



This map is not intended for navigational use.